

3 BEDROOM WOODLAND HOME

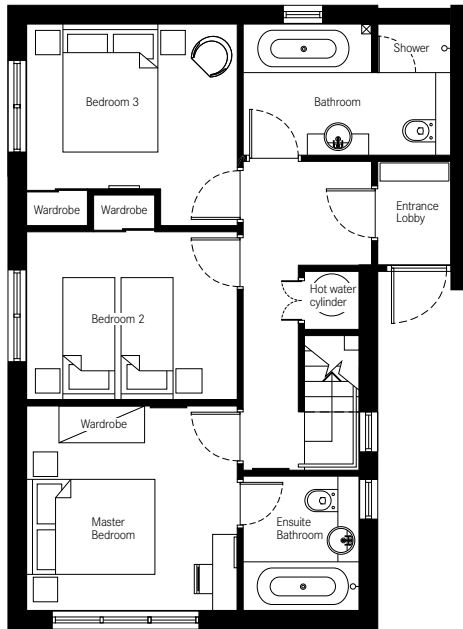
Summary of accommodation with approximate dimensions

Ground Floor

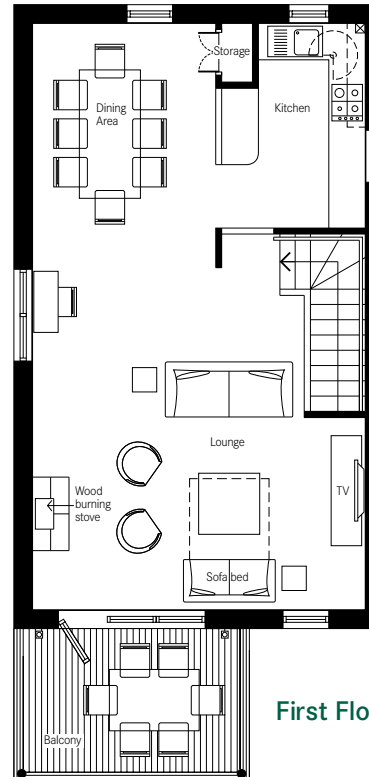
Master bedroom	3.44m x 3.34m	11'3" x 11'2"
En suite bathroom	2.19m x 1.89m	7'3" x 6'2"
Bedroom 2	3.44m x 2.73m	11'3" x 9'0"
Bedroom 3	3.44m x 2.70m	11'3" x 8'9"
Bathroom	3.39m x 2.14m	11'1" x 7'0"

First Floor

Lounge (inc. stairwell)	6.21m x 5.45m	20'4" x 17'9"
Balcony (external measurement)	3.58m x 2.35m	11'7" x 7'7"
Dining area	3.39m x 2.99m	11'1" x 9'8"
Kitchen area	3.31m x 2.46m	10'9" x 8'0"
Overall length of first floor living area	9.60m	31'5"



Ground Floor



First Floor

Floorplans

Important notice:

Details are correct at time of going to print.
All floorplans/ measurements are subject
to change and indicative only.

CONTACT US

01726 87 45 45

www.thecornwall.com

2 BEDROOM WOODLAND HOME

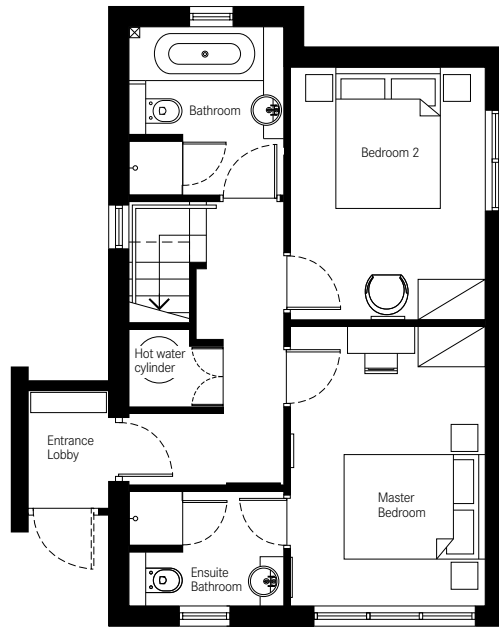
Summary of accommodation with approximate dimensions

Ground Floor

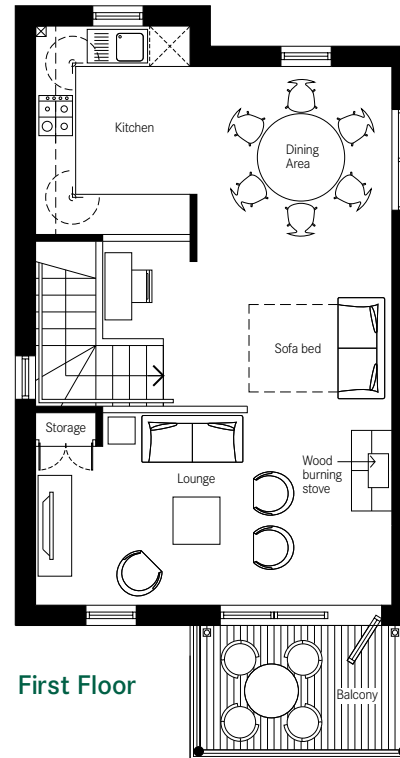
Master bedroom	4.15m x 2.88m	13'6" x 9'4"
En suite bathroom	2.30m x 1.70m	7'5" x 5'6"
Bedroom 2	3.75m x 2.88m	12'3" x 9'4"
Bathroom	2.37m x 2.30m	7'8" x 7'5"

First Floor

Lounge (inc. stairwell)	5.40m x 5.30m	17'7" x 17'4"
Balcony (external measurement)	2.97m x 2.0m	9'7" x 6'1"
Dining area	2.88m x 2.91m	9'4" x 8'5"
Kitchen area	3.08m x 2.3m	10'1" x 7'9"
Overall length of first floor living area	8.01m	26'3"



Ground Floor



First Floor

Floorplans

Important notice:

Details are correct at time of going to print.
All floorplans/ measurements are subject
to change and indicative only.

CONTACT US

01726 87 45 45

www.thecornwall.com